

# Fall INTO Winter

2021 PRODUCT COLLECTION







Each cookie cutter includes a full color branded recipe card that contains a sugar cookie recipe on the back

A perfect promotion for Halloween trick or treaters

Card Front  
Custom Artwork



Card Back  
Sugar Cookie Recipe

## Cookie Cutters

#3818 - #3838

**Includes:** Branded Recipe Card  
**Recipe Card Size:** 3 1/2" x 3 1/2"  
**Maximum Imprint Colors:** 1  
**Packaging:** Polybagged  
**Addl Run Charges:** \$.25 Per Color  
**Set-Up Charge:** \$40 Per Color

200	500	1000	2500	5000
2.36	2.22	2.14	2.03	1.96



### #3818 Pumpkin

Color: Orange  
Imprint Area: 3 1/8" x 1/2"  
Item Size: 3 7/8" x 3 1/2" x 1/2"  
Weight: 500 = 30 lbs.

### #3822 House

Color: White  
Imprint Area: 2 1/4" x 3/8"  
Item Size: 3 1/2" x 3 3/8" x 1/2"  
Weight: 500 = 30 lbs.

### #3832 Person

Color: White  
Imprint Area: 2 1/4" x 1/2"  
Item Size: 3" x 4 1/8" x 7/16"  
Weight: 500 = 30 lbs.

### #3838 Dog Bone

Color: White  
Imprint Area: 3 1/2" x 1/2"  
Item Size: 4 1/4" x 2 3/4" x 1/2"  
Weight: 500 = 30 lbs.

Additional shapes available: Tree, Heart, Candy Cane, Ribbon, & Star



Govino® 12oz  
Wine/Cocktail Glass

Material: Food-Safe BPA-Free Polymer  
Colors: Clear  
Imprint Area: 1 1/2" x 1 1/2"  
Maximum Imprint Colors: 2  
Item Size: 3" x 3 11/16" x 3"  
Weight: 72 = 22 lbs  
Packaging: Polybagged  
Addl Run Charges: \$25 Per Color  
Set-Up Charge: \$40 Per Color

Classic Version

#555

72	144	288	576	1152
3.71	3.65	3.58	3.53	3.47



Dishwasher Safe

#555DS

72	144	288	576	1152
4.76	4.69	4.60	4.53	4.46



govino™  
GO ANYWHERE WINE/COCKTAIL GLASS

The award-winning Govino wine/cocktail "glass" is actually not glass at all. It is made from a BPA-free polymer, which reflects a wine's color and projects its aromatics much like crystal.

Dishwasher safe version available as singles, 2 packs, and 4 packs as well



Pumpkin  
Carving Scoop

#3910

Colors: Orange or White  
Imprint Area: 2 1/2" x 1/2"  
Maximum Imprint Colors: 2  
Item Size: 10" x 2 1/2" x 1"  
Weight: 250 = 20 lbs.  
Packaging: Polybagged  
Addl Run Charges: \$25 Per Color  
Set-Up Charge: \$40 Per Color

250	500	1000	2500	5000
2.38	2.26	2.17	2.04	1.96



Double edged serrated scoop allows for a speedy and mess free pumpkin carving experience

Reinforced curved handle provides a firm and sturdy grip while removing heavy pulp and seeds





Each natural slate coaster includes feet to protect furniture

Packaged in an onyx presentation box and available as singles or sets of four

## Slate Coasters

**Colors:** Natural Black Slate  
**Maximum Imprint Colors:** 1  
**Packaging:** Onyx Presentation Box  
**Set-Up Charge:** \$40  
**Colorfy Run Charge:** \$.70

## Square Slate Coaster

#1651

**Imprint Area:** 2 7/8" x 2 1/2"  
**Item Size:** 4" x 4" x 3/16"  
**Weight:** 100 = 33 lbs.

100	250	500	1000	2500
2.84	2.67	2.56	2.47	2.34



#1651  
Box



#1661  
Box

## Round Slate Coaster

#1661

**Imprint Area:** 2 1/2" x 2 1/2"  
**Item Size:** 4" Dia. x 3/16"  
**Weight:** 100 = 24 lbs.

100	250	500	1000	2500
3.60	3.34	3.19	3.05	2.86







## Color Wrapped Classic Paddle Bottle Opener

#849

**Colors:** Silver w/Red, Blue, Orange, Green, Purple, or Black Vinyl Grip

**Imprint Area:** 3 1/4" x 1 1/8"

**Maximum Imprint Colors:** 2

**Item Size:** 7" x 1 5/8" x 1/8"

**Weight:** 100 = 21 lbs.

**Packaging:** Polybagged

**Addl Run Charges:** \$.25 Per Color/Location

**Set-Up Charge:** \$40 Per Color/Location

**Colorfy Run Charge:** \$.70

	100	250	500	1000	2500
	3.46	3.25	3.12	3.00	2.84



*Stainless steel wrapped in a vinyl coating for additional comfort*

*Sleek and sturdy design opens bottles with speed and ease*



## Round Bottle Opener Coaster

#1656

**Colors:** White

**Item Size:** 4 1/4" Dia. x 3/16"

**Imprint Area:** 2 1/4" x 2 1/4"

**Maximum Imprint Colors:** 2

**Weight:** 200 = 28 lbs.

**Packaging:** Bulk

**Addl Run Charges:** \$.25 Per Color

**Set-Up Charge:** \$40 Per Color

**Colorfy Run Charge:** \$.70

	250	500	1000	2500	5000
	2.09	2.01	1.94	1.84	1.78



*This handy coaster also doubles as a bottle opener*

*Square version available*





## Circle Strobe

#3500

**Colors:** Clear, Trans. Purple, Trans. Red, Trans. Orange, Trans. Green, Trans. Blue, or Trans. Yellow w/Red LED

**Imprint Area:** 1 5/8" Dia.

**Maximum Imprint Colors:** 2

**Item Size:** 1 7/8" x 1 7/8" x 5/8"

**Weight:** 500 = 23 lbs.

**Packaging:** Polybagged

**Addl Run Charges:** \$.25 Per Color

**Set-Up Charge:** \$40 Per Color

250	500	1000	2500	5000
1.57	1.51	1.46	1.36	1.32

*Features a loop which allows for optional necklace or safety pin attachment*

## Pumpkin Strobe

#3522

**Colors:** Orange w/Red LED

**Imprint Area:** 1 1/4" x 1 1/4"

**Maximum Imprint Colors:** 2

**Item Size:** 2 1/8" x 2" x 5/8"

**Weight:** 500 = 23 lbs.

**Packaging:** Polybagged

**Addl Run Charges:** \$.25 Per Color

**Set-Up Charge:** \$40 Per Color

250	500	1000	2500	5000
1.70	1.64	1.58	1.50	1.45





Each piece is constructed from comfortable and durable silicone material

Various color options available to choose from

## Quick Turn Pad Printed Wristbands

#8208

**Colors:** Black, Green, Maroon, Navy Blue, Orange, Pink, Purple, Red, Royal Blue, White, Yellow, Blue Glow, or Yellow Glow

**Imprint Area:** 2 1/2" x 5/16"

PMS Color Match is Not Available

**Maximum Imprint Colors:** 1

**Item Size:** 7 3/8" x 7/16"

**Weight:** 2500 = 31 lbs.

**Packaging:** Bulk

**Set-Up Charge:** \$40

**Production Time:** 2 Working Days

250	500	1000	2500	5000
1.37	1.33	1.30	1.23	1.20

## Silicone Link Wristband

#8219

**Colors:** Black, Blue, Green, Navy Blue, Lime Green, Orange, Pink, Purple, Red, White, or Yellow

**Imprint Area:** 1 1/4" x 1/2"

No PMS Match Available

**Maximum Imprint Colors:** 1

**Item Size:** 3" Dia. x 1/4"

**Weight:** 500 = 20 lbs.

**Packaging:** Bulk

**Set-Up Charge:** \$40

250	500	1000	2500	5000
1.89	1.86	1.83	1.77	1.74

## Silicone Wristband w/Metal Accent

#8222

**Colors:** Black, Green, Maroon, Navy Blue, Orange, Pink, Purple, Red, Royal Blue, White, Yellow, Blue Glow, or Yellow Glow

**Imprint Area:** 1 1/8" x 3/8"

**Maximum Imprint Colors:** 2

**Item Size:**

Wristband: 7 3/8" x 7/16"

Metal: 1 1/2" x 1/2"

**Weight:** 500 = 14 lbs.

**Packaging:** Bulk

**Addl Run Charges:** \$25 Per Color

**Set-Up Charge:** \$40 Per Color

250	500	1000	2500	5000
1.94	1.86	1.77	1.66	1.60

Additional Colors Available:



Additional Colors Available:



Additional Colors Available:







Great for outdoor and nighttime events

A fun alternative to typical wristbands

Each bracelet is lightweight and versatile, adjusting to your wrist, leg, bicycle, bag, and more!

## Reflective Safety Slap Bracelet

#1892

**Colors:** Neon Yellow, Orange, Pink or Blue

**Imprint Area:** 5" x 1/2"

**Maximum Imprint Colors:** 1

**Item Size:** 11 7/8" x 1 1/8"

**Weight:** 1000 = 35 lbs.

**Packaging:** Bulk

**Set-Up Charge:** \$40

200	500	1000	2500	5000
1.23	1.20	1.16	1.11	1.09

## Fabric Reflective Safety Bracelet

#1905

**Colors:** Black, Pink, Blue, or Yellow w/Silver Reflective Stripe

**Imprint Area:** 6" x 5/8"

**Maximum Imprint Colors:** 1

**Item Size:** 11 7/8" x 1 3/16" x 1/8"

**Weight:** 200 = 10 lbs.

**Packaging:** Bulk

**Set-Up Charge:** \$40

100	250	500	1000	2500
2.88	2.76	2.70	2.64	2.54





## Reflective Drawstring Tote

#1268

**Colors:** Black, Neon Yellow, or Neon Orange w/Reflective Silver Strip

**Imprint Area:** Reflective Strip Only  
6" x 1 1/4"

**Maximum Imprint Colors:** 1

**Item Size:** 14" x 17" x 1/8"

**Weight:** 200 = 31 lbs.

**Packaging:** Bulk

**Set-Up Charge:** \$40

100	250	500	1000	2500
3.67	3.47	3.34	3.22	3.06



*Includes reinforced corner grommets and a 2" wide reflective strip*

*The reflective strip enhances visibility to help ensure your safety while jogging, hiking, biking, or walking your dog at night*

*CPSIA compliant and recommended for ages 3+*



## Diamond Reflective Zipper Pulls

#1896

**Imprint Area:** 1 1/4" x 1"

**Item Size:** 1 3/4" x 1 3/4" x 1/16"



## Round Reflective Zipper Pulls

#1895

**Imprint Area:** 1 1/2" Dia.

**Item Size:** 2" Dia. x 1/16"

## Reflective Zipper Pulls

**Colors:** Neon Yellow, Orange, Pink or Blue

**Maximum Imprint Colors:** 2

**Item Size:** 1 3/4" x 1 3/4" x 1/16"

**Weight:** 2500 = 30 lbs.

**Packaging:** Polybagged

**Add Run Charges:** \$.25 Per Color/Location

**Set-Up Charge:** \$40 Per Color/Location

200	500	1000	2500	5000
.98	.91	.87	.82	.79

*Perfect for bags & backpacks*



Warning:  
Small Parts





Made from lightweight and durable 300D oxford fabric and features a side release buckle closure and a metal D-ring attachment for leashes

The adjustable collar strap has a 12 1/2" to 20" range allowing for the best fit for your pet

The bright color and reflective strip keep your pet safe and visible

## Reflective Pet Bandana

#1870

**Colors:** Yellow w/Reflective Strip

**Imprint Area:** Specify on Order

1: 5" x 1 1/2"

2: 2" Dia.

**Maximum Imprint Colors:** 1

**Item Size:**

Bandana: 8 1/2" x 5 9/16"

Strap: 12 1/2" - 20" x 1 1/8"

**Weight:** 100 = 9 lbs.

**Packaging:** Polybagged

**Set-Up Charge:** \$40

100	250	500	1000	2500
2.71	2.54	2.43	2.34	2.21

## Dog Bone Photo Holder

#7730 **NEW!**

**Colors:** Natural or White

**Imprint Area:** 3 1/2" x 1"

**Maximum Imprint Colors:** 2

**Item Size:**

Photo Holder: 4 3/4" x 1 7/8" x 11/16"

Box: 4 7/8" x 2 1/8" x 3/16"

**Weight:** 288 = 32 lbs.

**Packaging:** Kraft Box

**Addl Run Charges:** \$.25 Per Color/Location

**Set-Up Charge:** \$40 Per Color/Location

**Colorfy Run Charge:** \$.45

**Laser Engrave Run Charge:** \$2.00

100	250	500	1000	2500
3.13	3.01	2.95	2.89	2.79



These bone shaped photo holders can also be used to hold memos, business cards, table place cards, appointment cards, and more!

Each piece is made from natural pine wood and packaged in a decorative kraft box



3" x 2" photo insert size

Sturdy bent easel frame design

Constructed of high quality acrylic

Multiple imprint areas allows for additional customization

A fun and unique accent piece for either the home or office



### Dog Bone Photo Frame

#7725				
<b>Insert Size:</b> 3" x 2"				
<b>Colors:</b> White				
<b>Imprint Area:</b> Specify on Order				
Below Photo: 3 1/2" x 3/8"				
Above Photo: 3 1/2" x 1/2"				
Right or Left of Photo: 3/4" x 2"				
<b>Maximum Imprint Colors:</b> 2				
<b>Item Size:</b> 6 1/8" x 4" x 1/16"				
<b>Weight:</b> 216 = 14 lbs.				
<b>Packaging:</b> Polybagged				
<b>Addl Run Charges:</b> \$.25 Per Color/Location				
<b>Set-Up Charge:</b> \$40 Per Color/Location				
100	250	500	1000	2500
2.67	2.54	2.42	2.32	2.17



6 x 4 insert size

Bent acrylic easel back

Perfect for Halloween parties, special events, photographers, pumpkin patches, and more

### Pumpkin Photo Frame

#7727				
<b>Insert Size:</b> 6" x 4"				
<b>Colors:</b> Orange				
<b>Imprint Area:</b> Specify on Order				
Below Photo: 3" x 1/2"				
Above Photo: 3" x 1/2"				
<b>Maximum Imprint Colors:</b> 1				
<b>Item Size:</b> 8 1/16" x 6 5/8" x 1/16"				
<b>Weight:</b> 96 = 14 lbs.				
<b>Packaging:</b> Polybagged				
<b>Set-Up Charge:</b> \$40				
96	192	384	768	1536
3.50	3.36	3.23	3.10	2.99





## Cherry Pitter

#3918

**Colors:** Red or White

**Imprint Area:** 1/2" x 1"

**Maximum Imprint Colors:** 2

**Item Size:** 2 1/4" x 1 7/16" x 3 7/8"

**Weight:** 120 = 19 lbs.

**Packaging:** Individually Boxed

**Addl Run Charges:** \$.25 Per Color

**Set-Up Charge:** \$40 Per Color

120	240	360	720	1440
2.96	2.83	2.77	2.71	2.60



*Removes cherry pits efficiently and effortlessly. Just place the cherry in the gadget and press!*

*The spring loaded plunger pits both large and small cherries without bruising or wasting fruit*

*Twist lock plunger ensures safe storage when not in use*

*Featuring a serrated edge, this sturdy metal turner pairs perfectly with brownies, casseroles, pies, as well as a variety of other cooked and baked goods*

## Metal Turner w/Serrated Edge

#3900

**Colors:** White

**Imprint Area:** 2 1/8" x 1/2"

**Maximum Imprint Colors:** 2

**Item Size:** 9 1/4" x 2"

**Weight:** 125 = 30 lbs.

**Packaging:** Individually Boxed

**Addl Run Charges:** \$.25 Per Color

**Set-Up Charge:** \$40 Per Color

125	250	500	1000	2500
3.09	3.03	2.98	2.92	2.82





This combination measuring spoon includes measurements of: 1 tablespoon, 1 teaspoon, 1/2 teaspoon and 1/4 teaspoon

4 Way  
Measuring Spoon

#812  
**Measurements:** 1 tbsp, 1 tsp, 1/2 tsp, and 1/4 tsp  
**Colors:** White or Yellow  
**Imprint Area:** 1 15/16" x 5/8"  
**Maximum Imprint Colors:** 2  
**Item Size:** 5 3/8" x 1 3/4"  
**Weight:** 250 = 9 lbs.  
**Packaging:** Bulk  
**Addl Run Charges:** \$.25 Per Color  
**Set-Up Charge:** \$40 Per Color

250	500	1000	2500	5000
.83	.79	.75	.71	.68



This server features a serrated edge for easy cutting

Allows for the perfect slice and serve without damaging your deserts

Metal Cake/Pie Server

#3840  
w/Serrated Edge  
**Colors:** White w/Black Trim  
**Imprint Area:** 2 1/8" x 1/2"  
**Maximum Imprint Colors:** 2  
**Item Size:** 10 1/4" x 2 1/4"  
**Weight:** 150 = 42 lbs.  
**Packaging:** Individually Boxed  
**Addl Run Charges:** \$.25 Per Color  
**Set-Up Charge:** \$40 Per Color

125	250	500	1000	2500
3.09	3.03	2.98	2.92	2.82







This charming measuring spoon set is perfect for both your cooking and baking needs

Each set includes four standard measurement sizes: 1 tbsp, 1 tsp, 1/2 tsp, and 1/4 tsp

To ensure the longevity of this item, hand wash with mild soapy water and allow to air dry

## Wooden Measuring Spoons

#3947

**Measurements:** 1 tbsp, 1 tsp, 1/2 tsp, and 1/4 tsp

**Colors:** Bamboo

**Imprint Area:** 1 1/2" x 1 1/8"

**Maximum Imprint Colors:** 2

**Item Size:** 11"x 2 1/8" x 1"

**Weight:** 250 = 23 lbs.

**Packaging:** Polybagged

**Addl Run Charges:** \$25 Per Color/Location

**Set-Up Charge:** \$40 Per Color/Location

100	250	500	1000	2500
5.51	5.29	5.19	5.10	4.91



Made from durable bamboo wood which resists staining, cracking, and warping better than traditional wood utensils

Combine up to three bamboo utensils in an optional drawstring burlap bag!

## Bamboo Utensils

#3941 - #3943

**Colors:** Bamboo

**Imprint Area:** 4 1/2" x 1/2"

**Maximum Imprint Colors:** 2

**Item Size:** 11 7/8" x 2 5/16" x 3/8"

**Packaging:** Bulk

**Addl Run Charges:** \$25 Per Color

**Set-Up Charge:** \$40 Per Color

**Optional Utensil Bag (#UTENSBAG):** Add \$.85

100	250	500	1000	2500
2.21	2.06	1.96	1.88	1.77



3943 Bamboo Rounded Fork  
**Weight:** 400 = 36 lbs.

3942 Bamboo Slotted Spatula  
**Weight:** 400 = 31 lbs.

3941 Bamboo Spoon  
**Weight:** 400 = 34 lbs.



#3941

#3942

#3943

#UTENSBAG





Twist to open

Turn the handle to form the whisk

Closes flat for easy and convenient storage

## Collapsible Whisk

#3927

Colors: Gray, Green, or Blue w/White Handle

Imprint Area: 1 1/2" x 3/8"

Maximum Imprint Colors: 2

Item Size: 3" x 1 1/4" x 11 7/16"

Weight: 200 = 24 lbs.

Packaging: Polybagged

Add Run Charges: \$0.25 Per Color

Set-Up Charge: \$40 Per Color

100	250	500	1000	2500
2.70	2.59	2.54	2.49	2.40



Each cookie cutter includes a full color branded recipe card and imprinted metal cookie cutter in a gift box with silver cord

## Metal Cookie Cutters

#3806 - #3809

Includes: Branded Recipe Card

Colors: Silver

Item Size:

Recipe Card: 3 3/4" x 3 3/4"

Box: 3 3/4" x 4" x 1 5/8"

Maximum Imprint Colors: 1

Weight: 240 = 47 lbs.

Packaging: Acetate Box w/Silver Cord

Set-Up Charge: \$40

100	250	500	1000	2500
3.18	3.04	2.97	2.91	2.79



3806 Metal Heart

Imprint Area: 2 3/8" x 1/4"

Item Size: 3 3/4" x 4" x 1 1/2"

3807 Metal Star

Imprint Area: 2" x 1/4"

Item Size: 4" x 4" x 1 1/2"

3808 Metal Tree

Imprint Area: 1 1/2" x 1/4"

Item Size: 3 1/4" x 4" x 1 1/2"

3809 Metal House

Imprint Area: 1 3/4" x 1/4"

Item Size: 3 3/4" x 4" x 1 1/2"





*This multi purpose set is constructed from renewable bamboo wood and features a removable tempered glass cutting surface*

*Included with this set are three wine accessories: a bottle stopper, a bottle pourer/stopper, and a corkscrew with a standard opener, spiral worm, and serrated foil cutter*

## Cheese & Wine Set

#904

**Includes:** Bamboo Tray, Tempered Glass Cutting Board, Wine Stopper, Wine Pourer/Stopper, and Wine Corkscrew

**Colors:** Bamboo Wood w/Silver Accessories

**Imprint Area:** Specify On Order

Glass (Colorfy): Approx. 10 1/2" x 3 1/2"

Wood (Pad Print): 3/4" x 2"

**Maximum Imprint Colors:** 1

**Item Size:**

Tray: 4 3/4" x 11 11/16" x 1 1/4"

Glass: 3 7/8" x 10 3/4" x 3/16"

Stopper: 3/4" x 3 5/8" x 13/16"

Pourer/Stopper: 13/16" x 3" x 3/4"

Corkscrew: 13/16" x 4 5/16" x 7/16"

**Weight:** 12 = 21 lbs.

**Packaging:** Individually Boxed

**Set-Up Charge:** \$40

**Colorfy Run Charge:** \$1.25

24	48	96	240	528
18.82	18.51	18.22	17.65	17.37



Hand wash only



3 Wine Accessories Included

*The stainless steel wire blades cut through various cheeses*

*The doubled sided design allows for thin or thick slices*

## Cheese Knife

#911

**Colors:** White

**Imprint Area:** 1 3/4" x 1/2"

**Maximum Imprint Colors:** 2

**Item Size:** 8 5/8" x 1"

**Weight:** 250 = 22 lbs.

**Packaging:** Polybagged

**Addl Run Charges:** \$.25 Per Color

**Set-Up Charge:** \$40 Per Color

250	500	1000	2500	5000
2.28	2.19	2.11	2.00	1.94





Bamboo wood and a tempered glass cutting disc with a fork-tipped spear cheese knife

### Three Piece Cheese Board Set

#900

Colors: Wood w/Glass

Imprint Area:

Glass (Colorfy): 5 1/2" Dia.  
Wood (Pad Print): 4 1/4" x 2 1/2"

Maximum Imprint Colors: 2

Item Size:

Board: 10 1/4" x 8 1/4" x 9/16"  
Glass: 6" Dia. x 5/32"  
Knife: 6" x 1" x 1/2"

Weight: 12 = 17 lbs.

Packaging: Individually Boxed

Addl Run Charges:\$25 Per Color

Set-Up Charge: \$40 Per Color

Colorfy Run Charge: \$1.25

24	48	96	240	528
----	----	----	-----	-----

17.10	16.76	16.43	15.82	15.53
-------	-------	-------	-------	-------



Hand wash only



This complete set includes a tempered glass cutting board with non-slip feet and 4 stainless steel cheese knives with wood handles

Pricing includes Colorfy full color decorating on the glass cutting board

### Cheese Board & Knife Set

#906

**Includes:** Glass Cutting Board w/Non-Slip Feet, Soft Cheese Knife, Parmesan Shaver, Cheese Fork, and Hard Cheese Knife

Colors: Wood w/Glass

Imprint Area: 7 5/8" x 5 5/8"

Maximum Imprint Colors: Full Color

Item Size:

Glass Board: 7 7/8" x 5 7/8" x 1/8"  
Box: 8" x 6 1/4" x 1"

Weight: 24 = 28 lbs.

Packaging: Acetate Box w/Kraft Paper Wrap

Set-Up Charge: \$40

24	48	96	144	288
----	----	----	-----	-----

11.70	11.49	11.30	11.10	10.92
-------	-------	-------	-------	-------







*The Pulltap's Double Hinged Waiters Corkscrew is known for its incredible ease, sommelier style and the professional way it pulls estate-length corks without breaking them*

*Retractable Teflon-coated spiral glides effortlessly through all types of natural or synthetic corks*

*Features a metal body, a nickel-plated articulated double lever, bottle opener, and a sliding foil cutting blade with an automatic return mechanism*

## Pulltap's Double Hinged Waiters Corkscrew

#837

**Includes:** Bottle Opener and Retracting Blade

**Colors:** Black or Burgundy

**Imprint Area:** 2" x 1/4"

**Maximum Imprint Colors:** 2

**Item Size:** 4 3/4" x 7/8" x 1/2"

**Weight:** 150 = 26 lbs.

**Packaging:** Acetate Sleeve

**Addl Run Charges:** \$.25 Per Color

**Set-Up Charge:** \$40 Per Color

50	100	250	500	1000
9.78	9.44	8.98	8.69	8.42

*Pulltaps®*



## Wine Stopper

#6399

**Colors:** Silver w/Frosted White Topper

**Imprint Area:** Specify on Order

Circle: 5/8" x 5/8"

Shield: 3/4" x 3/4"

**Maximum Imprint Colors:** 2

**Item Size:** 1 1/4" x 3 3/4"

**Weight:** 100 = 22 lbs.

**Packaging:** Individually Boxed

**Addl Run Charges:** \$.25 Per Color

**Set-Up Charge:** \$40 Per Color

100	250	500	1000	2500
4.31	4.20	4.11	4.03	3.87



*Dual rubber seals preserve quality & taste*

*Shiny silver base with opaque frosted top*

*Tapered base fits various sized bottles*



Features a two-step spring-loaded lever, spiral/worm, bottle opener and serrated foil cutter

The 2 step cork extraction provides extra leverage and easier cork removal and won't bend or destroy even the most stubborn of corks

### Double Hinged Wine Key Corkscrew

#863  
**Colors:** Black or Faux Wood  
**Imprint Area:** 1 1/2" x 1/4"  
**Maximum Imprint Colors:** 2  
**Item Size:** 4 15/16" x 1 5/16" x 9/16"  
**Weight:** 100 = 22 lbs.  
**Packaging:** Individually Boxed  
**Addl Run Charges:**\$.25 Per Color/Location  
**Set-Up Charge:** \$40 Per Color/Location

100	250	500	1000	2500
4.29	4.13	4.06	3.98	3.84



Included Accessories

### Wine Gift Set

#854  
**Colors:** Silver Corkscrew and Stopper w/Rosewood Finished Box  
**Imprint Area:** 2 3/4" x 2 1/2"  
**Maximum Imprint Colors:** 2  
**Item Size:** 3 7/8" x 5 1/2" x 1 7/16"  
**Weight:** 36 = 30 lbs.  
**Packaging:** Individually Boxed  
**Addl Run Charges:**\$.25 Per Color  
**Set-Up Charge:** \$40 Per Color  
**Colorfy Run Charge:** \$.70

25	100	250	500	1000
13.50	13.03	12.39	12.00	11.63



This classic wine gift set includes a silver corkscrew and stopper neatly stored in a beautifully crafted rosewood finished box





*With 10 cocktail mixing tools to choose from, this convenient design turns anyone into a master mixologist*

**MUDDLER** Crush fruit, herbs, spices, etc.

**REAMER** Squeeze juice from your favorite fruits

**CHANNEL KNIFE** Create twists and other garnishes

**JIGGERS** Get a perfect 1 oz or 1/2 oz pour every time

**ZESTER** Capture the tang and aroma of citrus fruits

**KNIFE** Slice and dice ingredients and garnishes

**STIRRER** Blend cocktails thoroughly

**STRAINER** Separate ice from liquid as you pour

**CORKSCREW** Uncork your favorite bottle of wine

**BOTTLE OPENER** Pop the top off a beer or mixer

## Cocktail Multi Tool

#710

**Colors:** Beechwood Handle w/Stainless

**Steel Cocktail Accessories**

**Imprint Area:** 2 1/2" x 1/2"

**Maximum Imprint Colors:** 2

**Item Size:**

Tool: 8 3/4" x 1 5/8" x 2"

Box: 9 3/4" x 2 15/16" x 2 5/8"

**Weight:** 24 = 29 lbs.

**Packaging:** Black Window Box

**Addl Run Charges:** \$25 Per Color

**Set-Up Charge:** \$40 Per Color

**Laser Engrave Run Charge:** \$2.00

24 48 96 144 288

18.46 18.14 17.82 17.52 17.23



Muddler



Reamer



Channel Knife



Jiggers



Zester



Knife



Bottle Opener



Corkscrew



Strainer



Stirrer





# Mini Campfire Mug Shot Glass

#6312  
**Colors:** White, Green, Red, Blue, or Black  
**Imprint Area:** 1" x 3/4"  
**Maximum Imprint Colors:** 2  
**Item Size:**  
Mug: 2 13/16" x 1 7/8" x 2 3/16" Dia.  
Box: 2 15/16" x 2 7/16" x 2 3/16"

**Weight:** 72 = 14 lbs.  
**Packaging:** Kraft Packaging  
**Addl Run Charges:**\$.25 Per Color/Location  
**Set-Up Charge:** \$40 Per Color/Location

84	252	504	1008	2520
5.14	4.97	4.88	4.80	4.64



*These distinctively charming 2 oz. mini campfire mug shot glasses are sure to stand out and make an impression*

*Packaged in a decorative kraft gift box and is made with powder coated carbon steel*



*Includes citrus reamer, strainer, 1/2 oz container, pouring spout, and storage lid*

*Easy and compact all in one tool*

*The strainer catches pulp and seeds*

*Juice can be stored in the same container*

*Pours the perfect amount of fresh juice every time*

*Disassembles for hand washing*

*FDA compliant*

## Citrus Juicer

#3925  
**Colors:** Yellow, Green, or White  
**Imprint Area:** 1/2" x 1"  
**Maximum Imprint Colors:** 1  
**Item Size:** 2 13/16" x 3 1/8" x 4"  
**Weight:** 60 = 15 lbs.  
**Packaging:** Individually Boxed  
**Addl Run Charges:**\$.25 Per Location  
**Set-Up Charge:** \$40 Per Location

60	120	240	480	960
3.94	3.73	3.55	3.38	3.24







## Whiskey Stone Set

#893

**Includes:** Pine Box, 6 Whiskey Stones, Instructions, and a Velvet Drawstring Pouch

**Colors:** Natural Pine w/Gray Stones

**Imprint Area:** 2 1/4" x 2 1/4"

**Maximum Imprint Colors:** 2

**Item Size:**

Box: 3" x 3" x 1 7/16"

Stone: 3/4" x 3/4" x 3/4"

**Weight:** 54 = 25 lbs.

**Packaging:** Individually Boxed

**Addl Run Charges:** \$ .25 Per Color

**Set-Up Charge:** \$40 Per Color

**Colorfy Run Charge:** \$.45

**Laser Engrave Run Charge:** \$2.50

48	96	144	288	576
8.53	8.22	8.08	7.80	7.54



*Each set includes 6 natural basalt stones and a velvet drawstring pouch housed in a natural pine gift box*

*Whiskey stones chill your dram while maintaining both the purity and flavor profile of the liquor*

*To use, place 2 - 3 chilled stones in your favorite drink and enjoy*

*After use, rinse and air dry before placing back in the freezer*



*Before using, chill the cubes for approximately 3-4 hours in the freezer for maximum effectiveness*

## Stainless Chilling Cubes

#897

**Includes:** 4 Stainless Steel Cubes, Instructions, and a Velvet Drawstring Pouch

**Colors:** Silver Cubes w/Black Velvet Drawstring

**Imprint Area:** 2 1/2" x 2 1/2"

**Maximum Imprint Colors:** 1

**Item Size:**

Box: 4 7/8" x 4 3/4" x 1 1/2"

Cube: 1 1/16" x 1 1/16" x 1 1/16"

**Weight:** 48 = 29 lbs.

**Packaging:** Individually Boxed

**Set-Up Charge:** \$40 Per Color

**Colorfy Run Charge:** \$.70

50	100	250	500	1000
10.12	9.96	9.67	9.52	9.39





Each distinctive bottle opener is made with genuine wood veneer

Wood Credit Card Bottle Opener

#1001

**Colors:** Natural Wood  
**Imprint Area:** 1 1/4" x 1 1/2"  
**Maximum Imprint Colors:** 2  
**Item Size:** 2 1/8" x 3 3/8" x 1/8"  
**Weight:** 250 = 30 lbs.  
**Packaging:** Polybagged  
**Addl Run Charges:** \$.25 Per Color/Location  
**Set-Up Charge:** \$40 Per Color/Location  
**Colorfy Run Charge:** \$.45

125	250	500	1000	2500
2.85	2.74	2.65	2.56	2.44



Bamboo Bottle Opener Keytag

#1007

**Colors:** Silver w/Bamboo Wood  
**Imprint Area:** 1/2" Dia.  
**Maximum Imprint Colors:** 1  
**Item Size:** 1 1/4" x 3 1/4" x 3/8"  
**Weight:** 250 = 16 lbs.  
**Packaging:** Polybagged  
**Set-Up Charge:** \$40

100	250	500	1000	2500
3.01	2.90	2.85	2.80	2.71



Durable and light weight  
beechwood with anti-corrosive  
#420 stainless steel

Opens bottles with speed & ease

Wood Paddle Bottle Opener

#852

**Colors:** Natural Beechwood  
**Imprint Area:** 3 1/4" x 1"  
**Maximum Imprint Colors:** 2  
**Item Size:** 7" x 1 1/2" x 3/8"  
**Weight:** 100 = 20 lbs.  
**Packaging:** Polybagged  
**Addl Run Charges:** \$.25 Per Color/Location  
**Set-Up Charge:** \$40 Per Color/Location  
**Colorfy Run Charge:** \$.70

100	250	500	1000	2500
4.55	4.34	4.24	4.14	4.00



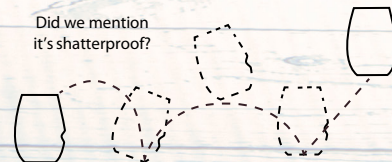




**govino**<sup>™</sup>  
GO ANYWHERE WINE GLASS

reusable shatterproof recyclable

Did we mention  
it's shatterproof?



The award-winning Govino wine "glass" is actually not glass at all. It is made from a BPA-free polymer, which reflects a wine's color and projects its aromatics much like crystal.

Available as singles, 2 packs\*, and 4 packs \*Dishwasher Safe Version Only



Ergonomic  
Thumb  
Notch



### Govino® 16oz Wine Glass

**Material:** Food-Safe BPA-Free Polymer  
**Colors:** Clear  
**Imprint Area:** 1 5/8" x 2"  
**Maximum Imprint Colors:** 2  
**Glass Size:** 3 1/4" x 4 3/8" x 3"  
**Weight:** 72 = 29 lbs  
**Packaging:** Polybagged  
**Addl Run Charges:** \$.25 Per Color  
**Set-Up Charge:** \$40 Per Color

#### Classic Version

#542

72	144	288	576	1152
----	-----	-----	-----	------

3.71	3.65	3.58	3.53	3.47
------	------	------	------	------



#### Dishwasher Safe

#542DS

72	144	288	576	1152
----	-----	-----	-----	------

4.80	4.72	4.63	4.56	4.49
------	------	------	------	------







The award-winning Govino® whiskey “glass” is comprised of a flexible yet highly resilient BPA/BPS-free polymer, which reflects the color and projects the aromatics of all types of whiskeys, bourbons, ryes, as well as all other spirits and cocktails

It's a brilliant solution for all indoor and outdoor entertaining, providing function and convenience without sacrificing elegance

## Dishwasher Safe Govino® 14oz Whiskey Glass

#538DS

**Material:** Food-Safe BPA-Free Polymer

**Colors:** Clear

**Imprint Area:** 1 1/2" x 1 1/2"

**Maximum Imprint Colors:** 2

**Glass Size:** 3 3/16" x 3 1/2" x 3" Dia.

**Weight:** 72 = 21 lbs

**Packaging:** Polybagged

**Addl Run Charges:** \$.25 Per Color

**Set-Up Charge:** \$40 Per Color

72	144	288	576	1152
4.80	4.72	4.63	4.56	4.49



Ergonomic  
Thumb Notch





*This lightweight 16 oz mug is perfect for camping, tailgating, picnics, as well as everyday use*

*Ideal for warm drinks, soups, and more*

*These classic mugs are FDA approved*

## 16 oz Campfire Mug

#714

**Material:** Carbon Steel

**Colors:** White, Green, Red, Blue, or Black

**Imprint Area:** 1 3/4" x 1 3/4"

**Maximum Imprint Colors:** 2

**Item Size:** 5 5/16" x 3 5/8" x 3 5/8" Dia.

**Weight:** 64 = 32 lbs.

**Packaging:** Polybagged

**Addl Run Charges:** \$.25 Per Color/Location

**Set-Up Charge:** \$40 Per Color/Location

64	128	256	512	1024
6.24	6.01	5.89	5.78	5.68



*Featuring an outdoorsy aesthetic, these tumblers are perfect for outdoor activities as well as use in any casual indoor setting*

*Constructed from durable carbon steel and finished with a speckled powder coating*

*In order to retain the piece's quality and finish, please hand wash only*

*FDA and Prop 65 compliant*

## 14 oz Campfire Tumbler

#717

**Material:** Powder Coated Carbon Steel

**Colors:** Red, Blue, Green, White, or Black

**Imprint Area:** 2 1/2" x 1/2"

**Maximum Imprint Colors:** 1

**Item Size:** 3 1/2" Dia. x 5"

**Weight:** 64 = 32 lbs.

**Packaging:** Polybagged

**Set-Up Charge:** \$40

**Silkscreen Imprint Area:** 3" x 2 1/4"

**Silkscreen Set-Up Charge:** \$45

64	128	256	512	1024
6.24	6.01	5.89	5.78	5.68







## Woodlands Coaster

#1671

**Includes:** 1 Woodlands Coaster in a Reusable Burlap Bag  
**Burlap Bag Size:** 5 1/4" x 6 5/8"  
**Weight:** 200 = 31-34 lbs.

100	250	500	1000	2500
5.07	4.90	4.82	4.75	4.60

*Each natural Poplar wood coaster is unique in structure, resulting in color and size variations*

*Repeated use creates a weathered patina, adding to its overall warmth and character*

*Packaged in reusable drawstring closure burlap bags made from natural jute*

## Woodlands Coaster Duo

#1672

**Includes:** 2 Woodlands Coasters in a Reusable Burlap Bag  
**Burlap Bag Size:** 5 1/4" x 6 5/8"  
**Weight:** 100 = 28-31 lbs.

100	250	500	1000	2500
8.59	8.28	8.14	8.00	7.73

## Woodlands Coaster Set

#1674

**Includes:** 4 Woodlands Coasters in a Reusable Burlap Bag  
**Burlap Bag Size:** 6 1/4" x 7 3/4"  
**Weight:** 50 = 27-30 lbs.

50	100	250	500	1000
15.06	14.79	14.27	14.02	13.79



## Woodlands Coaster

**Colors:** Natural Poplar Wood  
**Imprint Area:** 2" x 2"  
**Maximum Imprint Colors:** 1  
**Coaster Size:** Approx. 4" Dia. x 7/16"  
**Packaging:** Burlap Drawstring Bag  
**Set-Up Charge:** \$40





## Square Absorbent Stone Coasters

**Colors:** Natural Cream  
**Imprint Area:** 3 3/4" x 2 1/2"  
**Maximum Imprint Colors:** 4  
**Item Size:** 4 1/4" x 4 1/4" x 5/16"  
**Packaging:** Natural Kraft Packaging  
**Addl Run Charges:** \$.25 Per Color  
**Set-Up Charge:** \$40 Per Color

## Square Absorbent Stone Coaster

**#1634**  
**Includes:** 1 Coaster w/Cork Backing  
**Weight:** 100 = 34 lbs.  
**Colorfy Run Charge:** \$.70

100	250	500	1000	2500
1.94	1.82	1.77	1.70	1.62



## Square Absorbent Stone Coaster Duo

**#1637**  
**Includes:** 2 Coasters w/Cork Backing  
**Weight:** 50 = 35 lbs.  
**Colorfy Run Charge:** \$1.25

100	250	500	1000	2500
3.64	3.43	3.30	3.19	3.04



## Square Absorbent Stone Coaster 4 Pack

**#1645**  
**Includes:** 4 Coasters w/Cork Backing  
**Weight:** 20 = 23 lbs.  
**Colorfy Run Charge:** \$1.95

50	100	250	500	1000
7.11	6.87	6.44	6.25	6.06



## Round Absorbent Stone Coasters

**Colors:** Natural Cream  
**Imprint Area:** 2 1/2" x 3"  
**Maximum Imprint Colors:** 1  
**Item Size:** 4 3/8" Dia. x 5/16"  
**Packaging:** Natural Kraft Packaging  
**Set-Up Charge:** \$40

## Round Absorbent Stone Coaster

**#1633**  
**Includes:** 1 Coaster w/Cork Backing  
**Weight:** 100 = 29 lbs.  
**Colorfy Run Charge:** \$.70

100	250	500	1000	2500
1.94	1.82	1.77	1.70	1.62



## Round Absorbent Stone Coaster Duo

**#1636**  
**Includes:** 2 Coasters w/Cork Backing  
**Weight:** 50 = 30 lbs.  
**Colorfy Run Charge:** \$1.25

100	250	500	1000	2500
3.64	3.43	3.30	3.19	3.04



## Round Absorbent Stone Coaster 4 Pack

**#1644**  
**Includes:** 4 Coasters w/Cork Backing  
**Weight:** 20 = 20 lbs.  
**Colorfy Run Charge:** \$1.95

50	100	250	500	1000
7.11	6.87	6.44	6.25	6.06







## Square Absorbent Stone Coaster Set

#1639

**Includes:** 4 Coasters w/Cork Backing and Natural Wood Holder

**Colors:** Natural Cream

**Imprint Area:** 3 3/4" x 2 1/2"

**Maximum Imprint Colors:** 4

**Item Size:**

Coaster: 4 1/4" x 4 1/4" x 5/16"

Wood Holder: 4 7/8" x 4 7/8" x 1 5/8"

**Weight:** 25 = 35 lbs.

**Packaging:** Natural Wood Holder

**Addl Run Charges:** \$1.00 Per Color

**Set-Up Charge:** \$40

**Colorfy Run Charge:** \$1.95

25	50	100	250	500
12.67	11.97	11.34	10.51	10.08



Cork backing to help protect furniture and other surfaces

Available in singles, duos, and sets as well

## Round Absorbent Stone Coaster Set

#1638

**Includes:** 4 Coasters w/Cork Backing and Natural Wood Holder

**Colors:** Natural Cream

**Imprint Area:** 2 1/2" x 3"

**Maximum Imprint Colors:** 1

**Item Size:**

Coaster: 4 3/8" Dia. x 5/16"

Wood Holder: 4 3/16" x 4 15/16" x 1 9/16"

**Weight:** 25 = 31 lbs.

**Packaging:** Natural Wood Holder

**Set-Up Charge:** \$40

**Colorfy Run Charge:** \$1.95

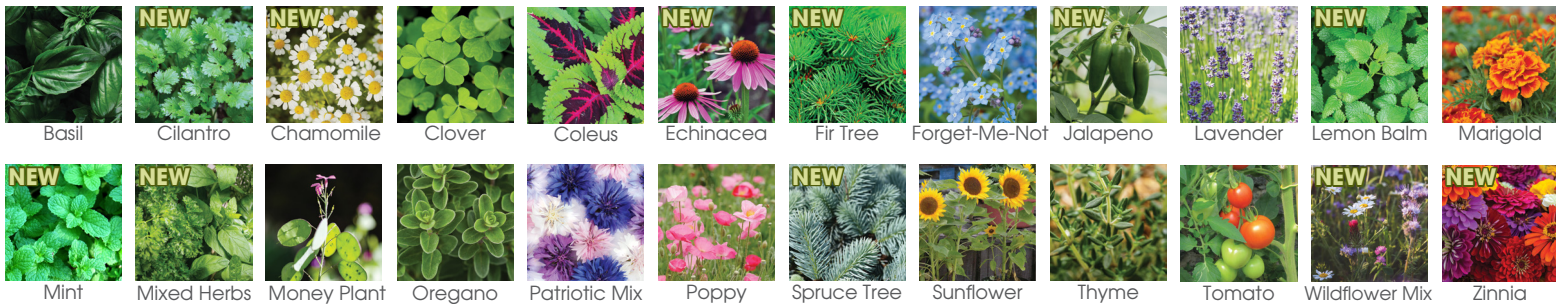
25	50	100	250	500
12.67	11.97	11.34	10.51	10.08







#### Available Seed Options



Bring a hint of the woody outdoors to your home or workspace with these mini campfire mug planters

Each kit comes packaged in a cheerful kraft gift box which contains a mini campfire mug planter, seed packet, peat pellet, and planting instructions

Constructed from durable carbon steel with a speckled powder coating finish - just like the classic full size mug!

#### Mini Campfire Mug Blossom Kit

#5657

**Includes:** 1 Seed Packet (Specify on Order), 1 Peat Pellet, 1 Mini Campfire Mug Planter, and Natural Kraft Box w/Instructions

**Colors:** White, Green, Red, Blue, or Black

**Imprint Area:** 1" x 3/4"

**Maximum Imprint Colors:** 2

**Item Size:**

Mug: 2 13/16" x 1 7/8" x 2 3/16" Dia.

Box: 2 15/16" x 2 7/16" x 2 3/16"

**Weight:** 84 = 15 lbs.

**Packaging:** Kraft Packaging

**Add'l Run Charges:** \$.25 Per Color/Location

**Set-Up Charge:** \$40 Per Color/Location

84 252 504 1008 2520

5.90 5.70 5.60 5.50 5.32





— Available Seed Options —



## Ceramic Planter Set

#5662

**Includes:** 1 Seed Packet (Specify on Order), 1 Peat Pellet, and 1 Ceramic Planter Set

**Colors:** White Planter and Bamboo Legs

**Imprint Area:** 1 3/8" x 1 3/4"

**Maximum Imprint Colors:** 2

**Item Size:**

Planter: 3 3/4" Dia. x 3"

Legs: 4 1/8" x 4 1/8" x 1 7/8"

**Weight:** 48 = 40 lbs.

**Packaging:** Individually Boxed

**Addl Run Charges:** \$.25 Per Color

**Set-Up Charge:** \$40 Per Color

**Silkscreen:**

**Silkscreen Area:** 9 1/2" x 2"

**Set-Up Charge:** \$45

**Maximum Imprint Colors:** 1

48	96	144	288	576
7.19	6.92	6.79	6.66	6.54



*Designed with a nod to modern minimalism, this planter set provides any room or workspace with an additional touch of style*

*Each planter set includes a ceramic planter, a bamboo leg set, a seed packet, and a peat pellet packaging in an informative brown kraft box*

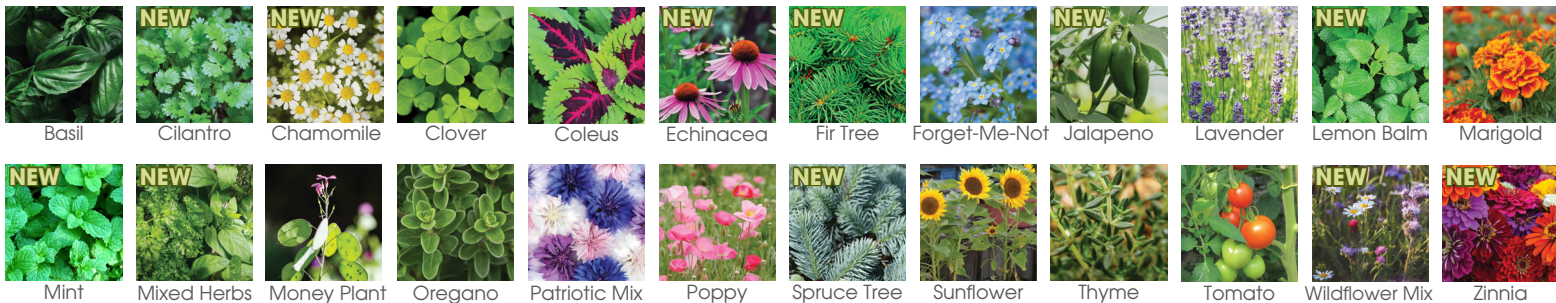
*The two-piece wooden bamboo stand fits firmly together, allowing the ceramic planter to rest snugly on top*

*This set showcases a neutral and versatile design which complements nearly all decor aesthetics*





## Available Seed Options



### Wooden Cube Blossom Kit

#5650

**Includes:** 1 Seed Packet (Specify on Order), 1 Peat Pellet, 1 Wooden Cube Planter w/Plastic Liner, and 4CP Packaging w/Imprint on Top

**Colors:** Natural Pine Wood

**Imprint Area:** 2 3/8" x 2 3/8"

**Maximum Imprint Colors:** 2

**Item Size:** 3" x 3" x 3"

**Weight:** 144 = 35 lbs.

**Packaging:** 4CP Packaging

**Addl Run Charges:** \$.25 Per Color/Location

**Set-Up Charge:** \$40 Per Color/Location

**Colorfy Run Charge:** \$.45

**Full Custom 4CP Packaging:** \$40 Per Design

100	250	500	1000	2500
4.11	3.87	3.72	3.59	3.40

*Constructed from natural pine wood with a plastic liner designed to protect the wood from water damage*

*Includes wooden cube planter, seed packet, peat pellet, and 4CP packaging wrap with printed planting instructions*

*Pricing includes a one color/location imprint with full color logo on top of 4CP packaging wrap*

*Colorfy Full Color Decorating option available*





— Available Seed Options —



*Each blossom kit ornament comes with everything required to start growing: your choice of seeds, peat pellets, and an ornament that can double as the planter!*

*This environmentally conscious ornament is made using a bio-based PLA thermoplastic, which is a renewable and biodegradable material*

*Packaged in a natural gift box that includes detailed usage instructions*



## Blossom Kit Ornament

#1782 **NEW!**

**Colors:** Natural

**Imprint Area:** 1 3/8" Dia.

**Maximum Imprint Colors:** 2

**Item Size:** 3" Dia.

**Weight:** 144 = 26 lbs.

**Packaging:** Individually Boxed

**Addl Run Charges:** \$.25 Per Color

**Set-Up Charge:** \$40 Per Color

72	144	288	576	1152
----	-----	-----	-----	------

5.49	5.37	5.26	5.15	5.05
------	------	------	------	------





## Shatter Resistant Ornament

#1790

**Colors:** Black, Gold, Red, Green, Orange,

Silver, Purple, Blue, or Pearl

**Imprint Area:** 1 3/8" x 1 3/8"

**Maximum Imprint Colors:** 2

**Item Size:** 3 1/4" Dia.

**Weight:** 100 = 36 lbs.

**Packaging:** Clamshell

**Addl Run Charges:** \$.25 Per Color/Location

**Set-Up Charge:** \$40 Per Color/Location

100	250	500	1000	2500
2.65	2.51	2.45	2.39	2.28

*These practical holiday ornaments are designed to be lightweight and long-lasting*

*Available in 10 vibrant semi-matte colors*

*Constructed from shatter-resistant polystyrene*



Clamshell Packaging





## Mini Campfire Mug Ornament

#1714

**Colors:** White, Green, Red, Blue, or Black w/Twine Cord

**Imprint Area:** 1" x 3/4"

**Maximum Imprint Colors:** 2

**Item Size:**

Mug: 2 13/16" x 1 7/8" x 2 3/16" Dia.

Box: 2 15/16" x 2 7/16" x 2 3/16"

**Weight:** 84 = 15 lbs.

**Packaging:** Kraft Packaging

**Addl Run Charges:** \$.25 Per Color/Location

**Set-Up Charge:** \$40 Per Color/Location

84	252	504	1008	2520
----	-----	-----	------	------

5.46	5.26	5.16	5.07	4.90
------	------	------	------	------

*Perfect for adding a bit of rustic charm to a Christmas tree or ornament stand for the holidays*

*Packaged in a decorative kraft gift box and includes a twine cord for hanging*

*Constructed from durable carbon steel and finished with a speckled powder coating*







## Shatter Resistant Flat Round Ornament

#1791

**Colors:** Green, Red, Blue,  
Silver, Purple, Gold, Black, or Pearl

**Imprint Area:** 2" Dia.

**Maximum Imprint Colors:** 2

**Item Size:** 3 1/8" Dia. x 3/4"

**Weight:** 240 = 16 lbs.

**Packaging:** Clear Acetate Box

**Addl Run Charges:** \$.25 Per Color/Location

**Set-Up Charge:** \$40 Per Color/Location

**Colorfy Run Charge:** \$.45

100	250	500	1000	2500
2.07	1.95	1.88	1.81	1.72

*These practical holiday ornaments are designed  
to be lightweight and long-lasting*

*Available in 8 vibrant semi-matte colors*

*Constructed from shatter-resistant polystyrene*

*Colorfy full color decoration option available*



Acetate Box







## Shatter Resistant Flat Star Ornament

#1792

**Colors:** Green, Red, Blue,  
Silver, Purple, Gold, Black, or Pearl

**Imprint Area:** 1 3/8" x 1 1/4"

**Maximum Imprint Colors:** 2

**Item Size:** 3" x 3" x 3/4"

**Weight:** 240 = 16 lbs.

**Packaging:** Clear Acetate Box

**Addl Run Charges:** \$.25 Per Color/Location

**Set-Up Charge:** \$40 Per Color/Location

**Colorfy Run Charge:** \$.45

100	250	500	1000	2500
-----	-----	-----	------	------

2.07	1.95	1.88	1.81	1.72
------	------	------	------	------



*These practical holiday ornaments are designed  
to be lightweight and long-lasting*

*Available in 8 vibrant semi-matte colors*

*Constructed from shatter-resistant polystyrene*

*Colorfy full color decoration option available*



Acetate Box





## Light-Up Glass Ornament

#1785

Includes 3 Button Cell Batteries

**Colors:** Red, Blue, Silver, or Gold

**Imprint Area:** 1 3/8" x 1 1/4"

**Maximum Imprint Colors:** 2

**Item Size:** 3" Dia.

**Weight:** 80 = 35 lbs.

**Packaging:** Clear Acetate Box

**Addl Run Charges:** \$.25 Per Color/Location

**Set-Up Charge:** \$40 Per Color/Location

80	160	320	640	1280
4.05	3.90	3.75	3.62	3.50

*Beautiful glass with laser etched snowflake design allows color changing LED lights to shine through*

*Includes an on/off switch and replaceable batteries*



Acetate Box





## Light-Up Shatter Resistant Ornament

#1786

Includes 3 Button Cell Batteries

**Colors:** Frosted, Frosted Green, Frosted Blue, or Frosted Red

**Imprint Area:** 1 1/2" x 1 1/4"

**Maximum Imprint Colors:** 2

**Item Size:** 3" Dia.

**Weight:** 120 = 29 lbs.

**Packaging:** Clear Acetate Box

**Addl Run Charges:** \$.25 Per Color/Location

**Set-Up Charge:** \$40 Per Color/Location

100	250	500	1000	2500
3.80	3.52	3.35	3.20	3.00

*Features color changing LED lights*

*Includes on/off switch and replaceable batteries*



Acetate Box





## Hand Blown Glass Ornament

#1787

**Colors:** Frosted Green, Frosted Blue,

Frosted Red, Frosted, or Iridescent

**Imprint Area:** 1 1/8" x 1 1/8"

**Maximum Imprint Colors:** 2

**Item Size:** 3 1/8" Dia.

**Weight:** 80 = 14 lbs.

**Packaging:** Clear Acetate Box

**Addl Run Charges:** \$.25 Per Color/Location

**Set-Up Charge:** \$40 Per Color/Location

80	160	320	640	1280
3.97	3.77	3.59	3.43	3.28

*Each beautiful glass ornament  
is hand blown*

*Individually packaged in a  
decorative presentation box*

*Silver hanging string included*



Acetate Box





## Holiday Glitz Ornament

#1781 **NEW!**

**Colors:** Red, Blue, Pearl, Silver, or Gold

**Imprint Area:** 1 3/8" Dia.

**Maximum Imprint Colors:** 2

**Item Size:** 3 1/8" Dia.

**Weight:** 120 = 10 lbs.

**Packaging:** Clear Acetate Box

**Addl Run Charges:** \$.25 Per Color/Location

**Set-Up Charge:** \$40 Per Color/Location

120	240	480	960	1920
2.94	2.79	2.66	2.53	2.42

Add some sparkle to your festivities with these unique Holiday Glitz Ornaments

Each ornament houses sparkling coils of glitter

Available in 5 dazzling holiday colors

Constructed from lightweight and robust PET



Acetate Box





*Made from natural slate stone, each charming piece features its own unique texture and characteristics*

*A jute twine cord compliments the natural look and feel of these elegant ornaments*

*Packaged in a velvety black tray and onyx presentation box*



### 1784 Gift Tag

**Imprint Area:** 1 1/2" x 1 1/2"  
**Item Size:** 2 5/16" x 3 1/16" x 3/16"  
**Weight:** 200 = 31 lbs.

### Slate Ornament

#1784 **NEW!**

**Colors:** Natural Black Slate w/Twine Cord  
**Maximum Imprint Colors:** 2  
**Box Size:** 4 3/8" x 4 3/8" x 3/4"  
**Packaging:** Onyx Presentation Box  
**Addl Run Charges:** \$.25 Per Color/Location  
**Set-Up Charge:** \$40 Per Color/Location  
**Colorfy Run Charge:** \$.45

100	250	500	1000	2500
3.74	3.57	3.50	3.42	3.29



### 1784 Round

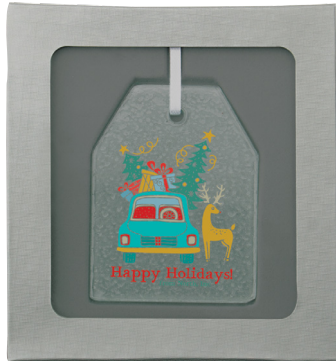
**Imprint Area:** 1 1/2" x 1 1/2"  
**Item Size:** 3" Dia. x 3/16"  
**Weight:** 200 = 34 lbs.





### 1789 Circle

**Imprint Area:** 1 1/2" x 1 1/2"  
**Item Size:** 3" Dia. x 1/8"  
**Weight:** 200 = 26 lbs.



### 1789 Gift Tag

**Imprint Area:** 1 1/2" x 1 1/2"  
**Item Size:** 2 5/16" x 3 1/16" x 1/8"  
**Weight:** 200 = 25 lbs.



### 1789 Oval

**Imprint Area:** 1 1/4" x 1 1/4"  
**Item Size:** 2 3/8" x 3 1/8" x 1/8"  
**Weight:** 200 = 23 lbs.



### 1789 Star

**Imprint Area:** 1" x 1"  
**Item Size:** 3" x 3" x 1/8"  
**Weight:** 200 = 20 lbs.



## Hammered Glass Ornament

#1789

**Colors:** Clear w/White Ribbon

**Maximum Imprint Colors:** 2

**Box Size:** 4 5/8" x 5" x 3/4"

**Packaging:** Gray Gift Box

**Addl Run Charges:** \$.25(C) Per Color

**Set-Up Charge:** \$40 Per Color

**Colorfy Run Charge:** \$.45

100	250	500	1000	2500
3.94	3.69	3.61	3.53	3.39



*These festive ornaments feature a hammered texture and gray gift box*

*Colorfy full color decorating available*





*Made with high quality ceramic glazed to a high gloss finish*

*Each piece includes an attached gray cord for hanging*

*Packaged in a soft velveteen tray & placed in a shimmering silver box*

## Ceramic Ornament

#1793

**Colors:** White w/Gray Cord

**Maximum Imprint Colors:** 2

**Box Size:** 4 1/2" x 5" x 3/8"

**Packaging:** Silver Gift Box

**Addl Run Charges:** \$.25 Per Color/Location

**Set-Up Charge:** \$40 Per Color/Location

**Colorfy Run Charge:** \$.45

100	250	500	1000	2500
4.26	4.03	3.88	3.74	3.56



### 1793 Circle

**Imprint Area:** 2" x 1 1/2"

**Item Size:** 2 7/8" Dia. x 1/8"

**Weight:** 200 = 27 lbs.



### 1793 Heart

**Imprint Area:** 1 7/8" x 1 1/8"

**Item Size:** 3" x 2 7/8" x 1/8"

**Weight:** 200 = 26 lbs.



### 1793 Oval

**Imprint Area:** 1 5/8" x 1 1/2"

**Item Size:** 2 1/4" x 3 1/4" x 1/8"

**Weight:** 200 = 30 lbs.



### 1793 Star

**Imprint Area:** 1 3/4" x 1 3/8"

**Item Size:** 3 1/8" x 3 1/8" x 1/8"

**Weight:** 200 = 26 lbs.





### 1794 Circle

**Imprint Area:** 2 5/8" Dia.  
**Item Size:** 3 3/8" Dia. x 3/16"  
**Weight:** 200 = 25 lbs.



### 1794 Heart

**Imprint Area:** 2" x 1 1/4"  
**Item Size:** 2 3/8" x 3 1/4" x 3/16"  
**Weight:** 200 = 25 lbs.



### 1794 Oval

**Imprint Area:** 1 1/2" x 2"  
**Item Size:** 2 5/8" x 3 5/8" x 3/16"  
**Weight:** 200 = 25 lbs.



### 1794 Star

**Imprint Area:** 1 3/4" x 1 1/4"  
**Item Size:** 3 5/8" x 3 5/8" x 3/16"  
**Weight:** 200 = 25 lbs.



## Acrylic Ornament

#1794

**Colors:** Clear w/Silver Ribbon

**Maximum Imprint Colors:** 2

**Box Size:** 4 1/2" x 5" x 3/8"

**Packaging:** Silver Gift Box

**Addl Run Charges:** \$ .25 Per Color

**Set-Up Charge:** \$40 Per Color

**Colorfy Run Charge:** \$.45

100	250	500	1000	2500
5.44	5.11	4.91	4.73	4.48



*Laser precision cut crystal clear acrylic with beveled edges*

*Each piece includes a sparkling silver ribbon for hanging*

*Packaged in a velveteen tray and placed in a shimmering silver box*





Wood ornament comes packaged in a natural kraft envelope

Colorful full color decorating available

## Wood Ornament

#1796

Colors: Wood w/Twine Cord

Maximum Imprint Colors: 2

Envelope Imprint Area: 3 1/4" x 1 1/2"

Envelope Size: 3 7/8" x 3 7/8"

Packaging: Kraft Packaging

Addl Run Charges: \$.25 Per Color/Location

Set-Up Charge: \$40 Per Color/Location

Colorful Run Charge: \$.45

150	250	500	1000	2500
2.08	1.92	1.78	1.67	1.53



Envelope  
Back



Envelope  
Front

Two Available  
Imprint Areas



## 1796 Ornament

Imprint Area: 1 1/4" Dia.

Item Size: 2 7/8" x 3 3/4" x 1/8"

Weight: 500 = 23 lbs.



## 1796 Tree

Imprint Area: 1 1/2" x 1"

Item Size: 3 3/8" x 3 3/8" x 1/8"

Weight: 500 = 20 lbs.



## 1796 Snowflake

Imprint Area: 1 5/8" dia.

Item Size: 3 1/2" x 3 1/2" x 1/8"

Weight: 500 = 17 lbs.



## 1796 Snowman

Imprint Area: 1 1/4" x 7/8"

Item Size: 3 1/2" x 2 1/4" x 1/8"

Weight: 500 = 17 lbs.



## Wood Photo Ornament

#1797

**Insert Size:** 1 9/16" Dia.

**Colors:** Wood w/Twine Cord

**Imprint Area:** Specify on Order

Ornament: 1 1/4" x 1 1/4"

Envelope: 3 1/4" x 1 1/2"

**Maximum Imprint Colors:** 2

**Item Size:**

Ornament: 3 5/16" x 3 13/16" x 1/4"

Envelope: 3 7/8" x 3 7/8"

**Weight:** 600 = 24 lbs.

**Packaging:** Kraft Packaging

**Addl Run Charges:** \$.25 Per Color/ Location

**Set-Up Charge:** \$40 Per Color/Location

150	250	500	1000	2500
2.42	2.30	2.20	2.11	1.98



1788 Envelope

1797 Envelope

*Each ornament comes packaged in a natural kraft envelope with a complimentary twine cord for hanging included*

*An excellent holiday promotion as well as a special event keepsake includes a polystyrene lens to protect your image*

*Decoration on the ornament, as well as the envelope, are available*



*Can be hung vertically or horizontally*

## Wood Frame Photo Ornament

#1788 **NEW!**

**Insert Size:** 2" x 3"

**Colors:** Wood w/Twine Cord

**Imprint Area:** Specify on Order

Vertical: 1 1/2" x 2 1/2"

Horizontal: 2 1/2" x 1 1/2"

Envelope: 3" x 3"

**Maximum Imprint Colors:** 2

**Item Size:**

Ornament: 3 1/2" x 4 5/8" x 5/16"

Envelope: 4 5/16" x 5 3/8" x 1/4"

**Weight:** 250 = 19 lbs.

**Packaging:** Kraft Packaging

**Addl Run Charges:** \$.25 Per Color/Location

**Set-Up Charge:** \$40 Per Color/Location

150	250	500	1000	2500
2.86	2.73	2.61	2.50	2.35





Can be used as an ornament or magnet  
Retail inspired packaging



Magnetic Back



Retail Style Packaging

## Magnetic Snow Globe Ornament

#1778

**Insert Size:** 2 3/4" x 2 1/4" (Curved)

**Colors:** Silver w/Red Ribbon

**Imprint Area:** 1 1/4" x 1/2"

**Maximum Imprint Colors:** 2

**Item Size:** 3 1/16" x 3 5/8" x 1 1/8"

**Weight:** 72 = 21 lbs.

**Packaging:** Clamshell

**Addl Run Charges:** \$.25 Per Color

**Set-Up Charge:** \$40 Per Color

72	144	288	576	1152
5.78	5.56	5.36	5.18	5.01

## Snap-In Photo Wreath

#2075

**Insert Size:** 2 7/8" Dia.

**Colors:** Green or Red

**Imprint Area:** 2 5/8" Dia.

**Maximum Imprint Colors:** 2

**Item Size:** 5" Dia.

**Weight:** 100 = 7 lbs.

**Packaging:** Layer Packed Unassembled

**Addl Run Charges:** \$.25 Per Color

**Set-Up Charge:** \$40 Per Color

200	500	1000	2500	5000
2.60	2.42	2.32	2.17	2.08





Custom inserts can be added for an additional .50 plus set-up

Snap-In Snowflake

#985  
**Colors:** Clear w/Frosted Flare Tips  
**Insert Size:** 2 - 2 7/8" Dia.  
**Imprint Area:** 2 5/8" Dia.  
**Maximum Imprint Colors:** 1  
**Item Size:** 5" x 5 3/4"  
**Weight:** 500 = 30 lbs.  
**Packaging:** Layer Packed Unassembled  
**Set-Up Charge:** \$40

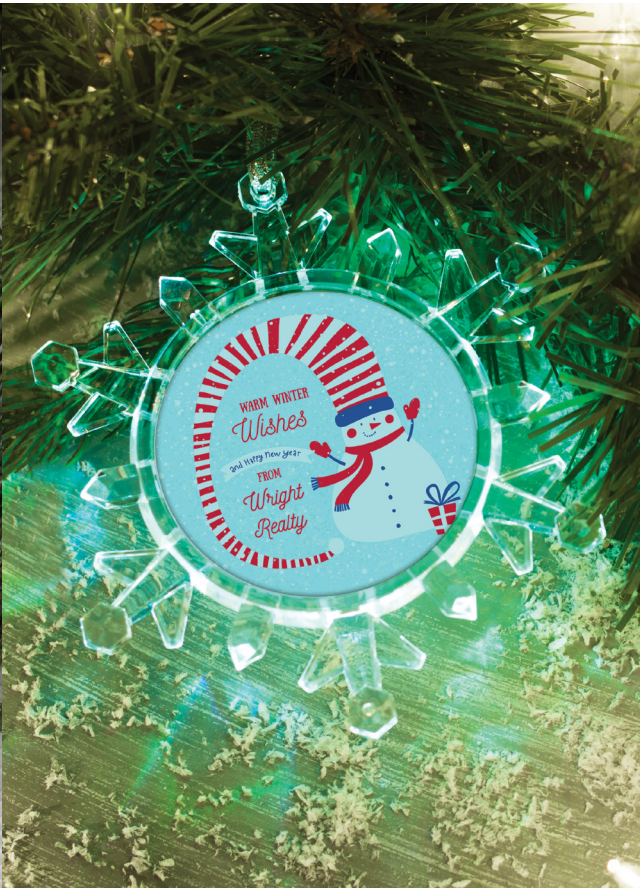
200	500	1000	2500	5000
2.38	2.19	2.08	1.94	1.85



Snap-In Snowflake

#987  
**Colors:** Clear w/Flare Tips  
**Insert Size:** Holds 2 - 2 1/4" Dia.  
**Imprint Area:** 2" Dia  
**Maximum Imprint Colors:** 1  
**Item Size:** 4 3/4" x 5 1/2"  
**Weight:** 200 = 18 lbs.  
**Packaging:** Layer Packed Unassembled  
**Set-Up Charge:** \$40

200	500	1000	2500	5000
1.82	1.71	1.65	1.57	1.51



On/off switch located on the back activates the color changing blue, red, and green LED lights

Custom inserts can be added for an additional .65 plus set-up

Light Up Photo Snowflake Ornament

#1776  
**Includes:** 3 Button Cell Batteries  
**Colors:** Clear w/Silver Ribbon  
**Insert Size:** 2 1/4" Dia.  
**Imprint Area:** 2" Dia.  
**Maximum Imprint Colors:** 2  
**Item Size:** 3 1/4" x 4 1/4" x 1/8"  
**Weight:** 24 = 6 lbs.  
**Packaging:** Clamshell  
**Addl Run Charges:** \$.25 Per Color  
**Set-Up Charge:** \$40 Per Color

48	96	144	288	576
5.68	5.47	5.27	5.09	4.92



Retail Style Packaging







Made from high quality 800g plush material

Embroidered and blank versions available

## Plush Christmas Stocking

#6677

**Includes:** Up to 10,000 Stitches

**Colors:** Green, Pink, Blue, Purple, or Red w/White Trim

**Embroidery Area:** 4" x 2"

**Maximum Stitch Colors:** 7

**Item Size:** 17 7/16" x 9"

**Weight:** 72 = 42 lbs.

**Packaging:** Bulk

**Set-Up Charge:** \$40

24	72	144	288	576
----	----	-----	-----	-----

19.67	18.97	18.63	18.31	18.00
-------	-------	-------	-------	-------

**10**





*Made from high quality 800g plush material*

*Embroidered and blank versions available*

## Plush Santa Hat

#6635

**Includes:** Up to 10,000 Stitches  
**Colors:** Red, Green, or Blue w/White Trim

**Embroidery Area:** 4" x 2"

**Maximum Stitch Colors:** 7

**Item Size:** 11 1/2" x 17 1/2"

(One Size Fits Most)

**Weight:** 72 = 42 lbs.

**Packaging:** Bulk

**Set-Up Charge:** \$40

24	72	144	288	576
19.67	18.97	18.63	18.31	18.00

10







*Each full-sized felt stocking is over 16" tall, which means there is plenty of room for holiday gifts and treats!*

*Made from lightweight felt, they make a perfect addition to the holiday mantle*

## Felt Christmas Stocking

#6777

**Colors:** Blue, Green, Pink, or Red w/White Trim

**Imprint Area:** 4" x 2"

**Maximum Imprint Colors:** 1

No PMS Match Available

**Item Size:** 10 1/2" x 16"

**Weight:** 250 = 42 lbs.

**Packaging:** Bulk

**Set-Up Charge:** \$40

100	250	500	1000	2500
-----	-----	-----	------	------

2.49	2.35	2.28	2.22	2.11
------	------	------	------	------

*These traditional Santa hats are made of lightweight felt*

*Available in 3 festive colors*

*Each hat features a bright white cuff and pom-pom tip*

*One size fits most*

## Felt Santa Hat

#6735

**Colors:** Blue, Green, or Red w/White Trim

**Imprint Area:** 6" x 1 1/2"

**Maximum Imprint Colors:** 1

No PMS Match Available

**Item Size:** 11 3/4" x 19 1/2"

(One Size Fits Most)

**Weight:** 250 = 42 lbs.

**Packaging:** Bulk

**Set-Up Charge:** \$40

100	250	500	1000	2500
-----	-----	-----	------	------

2.45	2.31	2.24	2.18	2.06
------	------	------	------	------





These charming miniature Christmas stockings measure just over 7" tall

Perfect for gift cards, treats, and even pets!

### Mini Felt Christmas Stocking

#6707

Colors: Red, Blue, or Green

Imprint Area: 3" x 1 1/4"

No PMS Match Available

Maximum Imprint Colors: 1

Item Size: 4 1/2" x 7" x 1/4"

Weight: 500 = 11 lbs.

Packaging: Bulk

Set-Up Charge: \$40

250	500	1000	2500	5000
1.78	1.64	1.52	1.39	1.30



Made from soft plush

Available as blanks only



### Plush Antlers

#20608

Colors: Brown

Item Size: 11 3/4" x 19 1/2"  
(One Size Fits Most)

Blank Only

24	96	240	480	960
4.40	4.40	4.40	4.40	4.40





## Wooden Block Set

#285

**Colors:** Natural Pine Wood w/Red, Light Blue, Dark Blue, Orange, Green, and Brown Designs

**Imprint Area:** 1 1/2" x 1 1/2" (Each Block)

**Maximum Imprint Colors:** Full Color

**Item Size:**

Blocks: 1 3/4" x 1 3/4" x 1 3/4"

Tray: 6 3/16" x 6 1/8" x 1 1/2"

Overall: 6 3/16" x 6 1/8" x 2"

**Weight:** 24 = 30 lbs.

**Packaging:** Natural Kraft Box

**Set-Up Charge:** \$40

24	48	96	144	288
14.13	13.88	13.63	13.39	13.16



*This nine piece block set is made from resilient pine wood and comes nestled in its own convenient wooden storage tray*

*Each block has five preprinted sides that feature numbers, letters, and various designs*

*Pricing includes a 1 1/2" x 1 1/2" full color imprint, up to nine different designs, on the blank side of each block*

*Each set is packaged in a kraft window box*

*CPSIA and CCPSA compliant*

## Wooden Jigsaw Puzzle

#276

**Colors:** Natural Wood

**Imprint Area:** 7 3/8" x 7 3/8"

**Maximum Imprint Colors:** Full Color

**Item Size:** 8 3/4" x 8 3/4" x 1/4"

**Weight:** 48 = 20 lbs.

**Packaging:** Shrink Wrapped

**Set-Up Charge:** \$40

48	96	288	576	1152
7.87	7.60	7.47	7.35	7.23



*Jigsaw puzzles are shown to improve problem solving skills, as well as increasing overall perception and understanding*

*Includes wood storage tray and 16 jigsaw pieces*

*Pricing includes Colorfy full color decorating*

*CPSIA and CCPSA compliant*





Wooden Truck

#275

Colors: Natural Wood w/Black Accents

Imprint Area:

Pad Print: 3" x 1"

Colorfy: 3 9/16" x 1 5/8"

Maximum Imprint Colors: 2

Item Size: 7 1/2" x 2 7/8" x 2"

Weight: 24 = 14 lbs.

Packaging: Individually Boxed

Addl Run Charges:\$ .25 Per Color/Location

Set-Up Charge: \$40 Per Color/Location

Colorfy Run Charge: \$.70

25	50	100	250	500
11.13	10.70	10.29	9.74	9.40

Decoration on opposite side of truck available  
Additional run charges and set-up apply

Wooden Semi Truck

#278

Colors: Natural Wood w/Black Accents

Imprint Area:

Pad Print: 4" x 1"

Colorfy: 4 7/8" x 1 1/4"

Maximum Imprint Colors: 2

Item Size: 8 3/8" x 2 7/8" x 1 7/8"

Weight: 36 = 23 lbs.

Packaging: Individually Boxed

Addl Run Charges:\$ .25 Per Color/Location

Set-Up Charge: \$40 Per Color/Location

Colorfy Run Charge: \$.70

36	72	144	288	576
12.30	11.81	11.59	11.37	11.16

Decoration on opposite side of truck available  
Additional run charges and set-up apply

Wooden Train Set

#273

Colors: Natural Wood w/Black Accents

Imprint Area:

Pad Print: 3 1/2" x 1 1/4"

Colorfy: 3 7/16" x 1 1/16"

Maximum Imprint Colors: 2

Item Size: 15" x 3 13/16" x 2 1/8"

Weight: 12 = 19 lbs.

Packaging: Individually Boxed

Addl Run Charges:\$ .25 Per Color/Location

Set-Up Charge: \$40 Per Color/Location

Colorfy Run Charge: \$.95

24	48	96	144	288
17.36	16.40	15.67	15.14	14.76

Decoration on opposite side of train cars available  
Additional run charges and set-up apply

Wooden Airplane

#280

Colors: Natural Wood

Imprint Area:

Pad Print: 5" x 1"

Colorfy: 6 1/2" x 1"

Item Size: 7 3/4" x 7" x 3 5/8"

Maximum Imprint Colors: 2

Weight: 36 = 18 lbs.

Packaging: Individually Boxed

Addl Run Charges:\$ .25 Per Color

Set-Up Charge: \$40 Per Color

Colorfy Run Charge: \$.70

24	48	96	144	288
12.01	11.78	11.56	11.35	11.15



Perfect for use as a keepsake

Made of wood and features rolling wheels

CPSIA and CCPSA compliant





## Snow Globe Photo Frame

#2711

**Insert Size:** 4" x 6"

**Colors:** Clear w/White Snow and Silver Glitter Snowflakes

**Imprint Area:** Specify on Order

Vertical: 3 1/2" x 3/4"

Horizontal: 5 1/2" x 3/4"

**Item Size:** 6 1/4" x 4 1/4" x 1 1/8"

**Maximum Imprint Colors:** 4

**Weight:** 12 = 14 lbs.

**Packaging:** Individually Boxed

**Addl Run Charges:** \$.25 Per Color/Location

**Set-Up Charge:** \$40 Per Color/Location

**Colorfy Run Charge:** \$.95

36	722	144	288	476
----	-----	-----	-----	-----

7.43	6.90	6.59	6.30	6.04
------	------	------	------	------



*All snow globe designs allow for quick and easy photo insertion*

*Custom printed inserts available (contact for details and pricing)*

*Holds an Instax Mini Film photo*

*The clear plastic frame contains snow, glitter, and silver snowflakes that move around*

*To insert your photo pop out the plastic lens on the back of the frame, insert your photo, snap in the plastic lens, and shake!*

## Instax Mini Snow Picture Frame

#2756

**Insert Size:** 2 1/8" x 3 3/8"

**Colors:** Clear w/White Snow and Silver Glitter Snowflakes

**Imprint Area:** Specify on Order

Vertical: 1 3/4" x 1/2"

Horizontal: 3" x 1/2"

**Maximum Imprint Colors:** 2

**Item Size:** 2 1/2" x 3 3/4" x 1"

**Weight:** 72 = 24 lbs.

**Packaging:** Individually Boxed

**Addl Run Charges:** \$.25 Per Color

**Set-Up Charge:** \$40 Per Color

72	144	288	576	1152
----	-----	-----	-----	------

4.11	3.92	3.75	3.60	3.45
------	------	------	------	------







## Mini Photo Globe

#2718

**Insert Size:** 1 5/8" x 3 5/16"

**Colors:** Clear w/Black or Silver Base

**Imprint Area:** 1 1/8" x 3/4"

**Maximum Imprint Colors:** 2

**Item Size:** 3 1/8" x 4"

**Weight:** 36 = 31 lbs.

**Packaging:** Individually Boxed

**Addl Run Charges:** \$.25 Per Color

**Set-Up Charge:** \$40 Per Color

36	72	144	288	576
----	----	-----	-----	-----

5.55	5.43	5.32	5.21	5.11
------	------	------	------	------

## Sphere Globe

#2721

w/Pliable Surface

**Insert Size:** 2 - 2" x 2 7/8"

1/2" on Bottom of Insert Inserts Into Base

**Colors:** Clear w/Black Base

**Imprint Area:** 1 1/4" x 3/4"

**Maximum Imprint Colors:** 2

**Item Size:** 4 1/4" x 4 3/4"

**Weight:** 12 = 23 lbs.

**Packaging:** Individually Boxed

**Addl Run Charges:** \$.25 Per Color

**Set-Up Charge:** \$40 Per Color

48	96	252	504	1008
----	----	-----	-----	------

6.85	6.58	6.22	6.01	5.80
------	------	------	------	------

US Patent #6,027,774

## Gift Card Snow Globe

#2707

**Insert Size:** 2 - 3 3/8" x 2 1/8"

**Colors:** Clear Dome w/Black Base

**Imprint Area:** 2 3/4" x 7/16"

**Maximum Imprint Colors:** 2

**Item Size:** 4 1/8" x 3 3/4" x 2 1/8"

**Weight:** 36 = 28 lbs.

**Packaging:** Individually Boxed

**Addl Run Charges:** \$.25 Per Color

**Set-Up Charge:** \$40 Per Color

108	252	504	1008	2520
-----	-----	-----	------	------

4.46	4.27	4.19	4.10	3.94
------	------	------	------	------

## Sphere Snow Globe

#2749

w/Pliable Surface

**Insert Size:** 2 - 2" x 2 7/8"

**Colors:** Clear w/Silver Base

**Imprint Area:** 1 3/8" x 5/8"

**Maximum Imprint Colors:** 2

**Item Size:** 4 1/4" x 6" x 4"

**Weight:** 12 = 24 lbs.

**Packaging:** Gift Box

**Addl Run Charges:** \$.25 Per Color

**Set-Up Charge:** \$40 Per Color

48	96	252	504	1008
----	----	-----	-----	------

8.06	7.92	7.64	7.51	7.39
------	------	------	------	------



*Each snow globe holds two photos, one on each side*

*Constructed of a soft pliable plastic surface*

*Pull the base off the bottom, insert your photos, push the base back on, and shake!*

Over 20 snow globe  
styles and sizes available





## 6 x 4 Beveled Glass Frame

#9164

w/Black Easel Velvet Back and Glass Front

**Insert Size:** 6" x 4"

**Colors:** Clear w/Silver Trim

**Imprint Area:** 6" x 1 1/4"

**Maximum Imprint Colors:** 2

**Item Size:** 8" x 7" x 1/8"

**Weight:** 24 = 23 lbs.

**Packaging:** Individually Boxed

**Addl Run Charges:** \$25 Per Color

**Set-Up Charge:** \$40 Per Color

	72	144	288	576	1008
	5.36	5.15	4.95	4.77	4.61

*Elegant beveled glass with velvet easel*

*Also available in horizontal format (#9166)*

## 6 x 4 Beveled Glass Frame w/Metal Accent

#9165

w/Black Easel Velvet Back and Glass Front

**Insert Size:** 6" x 4"

**Colors:** Clear w/Silver Trim

**Imprint Area:** 2 1/4" x 1/2"

**Maximum Imprint Colors:** 2

**Item Size:**

Frame: 8" x 7" x 1/8"

Metal Accent: 2 7/8" x 1" x 1/16"

**Weight:** 24 = 24 lbs.

**Packaging:** Individually Boxed

**Addl Run Charges:** \$25 Per Color

**Set-Up Charge:** \$40 Per Color

	72	144	288	576	1008
	6.36	6.15	5.95	5.77	5.61





6 x 4 Glass Frame

#8164

w/Glass Front

**Insert Size:** 6" x 4"

**Colors:** Silver Base

**Imprint Area:** 5" x 1"

**Maximum Imprint Colors:** 2

**Item Size:** 6" x 4 3/4" x 5/8"

**Weight:** 25 = 32 lbs.

**Packaging:** Individually Boxed

**Addl Run Charges:** \$ .25 Per Color

**Set-Up Charge:** \$40 Per Color

50	150	250	500	1000
10.43	10.03	9.84	9.66	9.48



4 x 6 Three Piece  
Brushed Silver Clip Frame

#4646

w/Black Velvet Back and Glass Front

**Insert Size:** 4" x 6"

**Colors:** Silver

**Imprint Area:** Specify on Order

Top: 3 1/2" x 7/16"

Bottom: 3 1/2" x 7/16"

**Maximum Imprint Colors:** 2

**Item Size:** 4" x 6"

**Weight:** 60 = 24 lbs.

**Packaging:** Individually Boxed

**Addl Run Charges:** \$ .25 Per Color/Location

**Set-Up Charge:** \$40 Per Color/Location

96	240	504	1008	2520
3.44	3.32	3.27	3.22	3.11





### 4 x 6 Album

#6164

Holds 24 - 4" x 6" Photos

**Colors:** Black w/White Stitching

**Imprint Area:** 2 3/4" x 4 1/2"

**Maximum Imprint Colors:** 1

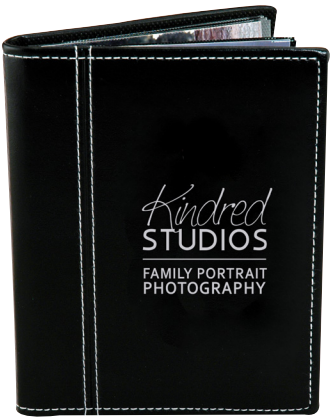
**Item Size:** 5" x 6 1/2" x 3/4"

**Weight:** 48 = 18 lbs.

**Packaging:** Individually Boxed

**Set-Up Charge:** \$40

96	252	504	1008	2508
6.03	5.81	5.71	5.61	5.42



### 4 x 6 Stitch Frame

#6146

w/Black Velvet Back and Glass Front

**Insert Size:** 4" x 6"

**Material:** Leatherette

**Colors:** Black w/White Stitching or White w/White Stitching

**Imprint Area:** Specify on Order

Vertical: 4" x 3/4"

Horizontal: 5" x 3/4"

**Maximum Imprint Colors:** 1

**Item Size:** 6 1/2" x 8 1/2"

**Weight:** 48 = 28 lbs.

**Packaging:** Individually Boxed

**Addl Run Charges:** \$.25 Per Location

**Set-Up Charge:** \$40 Per Location

48	240	504	1008	2508
7.48	7.21	7.09	6.96	6.73





- Ideal for festivals, special events, as well as greeting cards
- Other sizes and stock photo mounts available



## 5x7 Custom Photo Mount

#F57

Photo Viewing Area: 4 7/8" x 6 11/16"  
Item Size: 7 1/2" x 9 1/2"  
Outside Cover Area: 6 3/4" x 6 1/2"  
Inside Imprint Area: 4 1/2" x 1 1/4"  
Weight: 100 = 10 lbs.

250	500	1000	2500	5000
1.58	1.40	1.26	1.09	1.00

## 7x5 Custom Photo Mount

#F75

Photo Viewing Area: 6 5/8" x 4 5/8"  
Item Size: 9 1/2" x 7 1/2"  
Outside Cover Area: 8 7/8" x 7"  
Inside Imprint Area: 6" x 1 1/4"  
Weight: 100 = 10 lbs.

250	500	1000	2500	5000
1.58	1.40	1.26	1.09	1.00

## 4x6 Custom Photo Mount

#F46

Photo Viewing Area: 3 5/8" x 5 11/16"  
Item Size: 5 7/8" x 7 3/8"  
Outside Cover Area: 5 5/16" x 6 7/8"  
Inside Imprint Area: 3 3/8" x 5/8"  
Weight: 100 = 5 lbs.

250	500	1000	2500	5000
1.39	1.26	1.15	1.02	.97

## 6x4 Custom Photo Mount

#F64

Photo Viewing Area: 5 5/8" x 3 5/8"  
Item Size: 6 7/8" x 6"  
Outside Cover Area: 6 3/8" x 5 3/8"  
Inside Imprint Area: 5" x 1"  
Weight: 100 = 5 lbs.

250	500	1000	2500	5000
1.39	1.26	1.15	1.02	.97

**Outside:** Full Color Maximum | Set-Up Charge:\$40 Per Location  
**Inside:** 4 Spot Color Maximum | Set-Up Charge:\$40 Per Location | Addl Run Charges:\$.25 Per Color/Location

**Custom photo mounts:** full color customized fronts and up to 4 spot colors inside

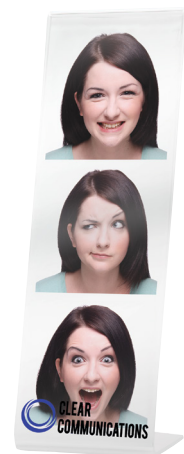


## Photo Strip Acrylic T-Frame

#442

**Insert Size:** 2" x 6"  
**Colors:** Clear  
**Imprint Area:** Specify on Order  
Top: 1 3/4" x 3/8"  
Base: 1 3/4" x 7/8"  
**Maximum Imprint Colors:** 2  
**Item Size:** 2" x 6 1/8" x 3/16"  
**Weight:** 200 = 19 lbs.  
**Packaging:** Polybagged  
**Addl Run Charges:** \$.25 Per Color/Location  
**Set-Up Charge:** \$40 Per Color/Location

200	400	1000	1600	2400
2.18	2.08	2.00	1.91	1.84



## Photo Strip Easel Frame

#441

**Insert Size:** 2" x 6"  
**Colors:** Clear  
**Imprint Area:** 1 7/8" x 1/2"  
**Maximum Imprint Colors:** 2  
**Item Size:** 2" x 6 1/8" x 1/8"  
**Weight:** 200 = 14 lbs.  
**Packaging:** Polybagged  
**Addl Run Charges:** \$.25 Per Color  
**Set-Up Charge:** \$40 Per Color

200	500	1000	2500	5000
1.88	1.78	1.71	1.62	1.57

Also  
Available  
in 2" x 8"





**govino™**  
GO ANYWHERE CHAMPAGNE FLUTE  
reusable shatterproof recyclable

## Dishwasher Safe Govino® 8oz Champagne Flute

#547DS

**Material:** Food-Safe BPA-Free Polymer

**Colors:** Clear

**Imprint Area:** 1 1/4" x 1 3/4"

**Maximum Imprint Colors:** 2

**Glass Size:** 2 1/8" x 5 1/4" x 1 5/8"

**Weight:** 72 = 16 lbs.

**Packaging:** Polybagged

**Addl Run Charges:** \$ .25 Per Color

**Set-Up Charge:** \$40 Per Color

72	144	288	576	1152
4.43	4.36	4.27	4.21	4.14



*The award-winning Govino champagne "flute" is actually not glass at all. It is made from a BPA-free polymer, which reflects a wine's color and projects its aromatics much like crystal.*

*Available as singles, 2 packs, and 4 packs*

*Made from 100% natural cork*

*Attached to a 1" split keyring on  
a 1 3/8" link chain*

## Wine Cork Keytag

#751

**Colors:** Natural Cork

**Imprint Area:** 3/8" x 1 1/8"

**Maximum Imprint Colors:** 2

**Item Size:** 7/8" Dia. x 1 11/16"

**Weight:** 500 = 14 lbs.

**Packaging:** Polybagged

**Addl Run Charges:** \$ .25 Per Color

**Set-Up Charge:** \$40 Per Color

250	500	1000	2500	5000
1.69	1.61	1.54	1.44	1.38





Made from Birch wood (top) and EVA (stopper)

To achieve a more natural look, opt for a tone on tone imprint (PMS 4625)

Packed on individual retail hanging card

All materials comply with FDA standards

### Wood Wine Stopper

#6393

**Colors:** Natural Birch Wood

**Imprint Area:** 3/4" Dia.

**Maximum Imprint Colors:** 2

**Item Size:** 1 3/8" Dia. x 1 3/8"

**Weight:** 250 = 9 lbs.

**Packaging:** Polybagged

**Addl Run Charges:** \$25 Per Color

**Set-Up Charge:** \$40 Per Color

125	250	500	1000	2500
3.03	2.89	2.76	2.64	2.49



Press the underside of base to turn on and off  
3 fast flash LED lights - red, green, and blue



### 2 oz Light Up Shotglass

#6311

**Includes:** 3 Replaceable LR1130 Button Cell Batteries

**Colors:** Clear w/Red, Green, and Blue LED Lights

**Imprint Area:** 1 1/8" x 1 1/8"

**Maximum Imprint Colors:** 2

**Item Size:** 2" x 2 1/2" x 2"

**Weight:** 250 = 19 lbs.

**Packaging:** Polybagged

**Addl Run Charges:** \$25 Per Color/Location

**Set-Up Charge:** \$40 Per Color/Location

200	500	1000	2500	5000
1.73	1.63	1.57	1.49	1.44





